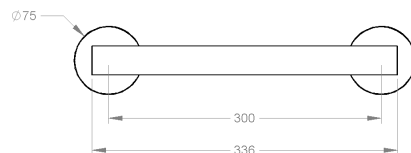
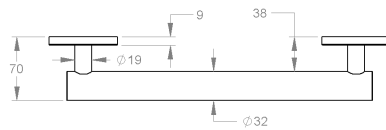


Parts Included	QTY
A - Grab Bar	1
B - Screw	6

Model #	Description	Finish	Weight (lb)	WxHxD (mm)	WxHxD (Inches)	Metal Type
V94432	12" Lava Grab Bar	Matte White	1.75	300 x 75 x 70	11.75 x 3 x 2.75	Brass
V94433	12" Lava Grab Bar	Chrome	1.75	300 x 75 x 70	11.75 x 3 x 2.75	Brass
V94434	12" Lava Grab Bar	Brushed Nickel	1.75	300 x 75 x 70	11.75 x 3 x 2.75	Brass
V94435	12" Lava Grab Bar	Matte Black	1.75	300 x 75 x 70	11.75 x 3 x 2.75	Brass
V94436	12" Lava Grab Bar	Polished Nickel	1.75	300 x 75 x 70	11.75 x 3 x 2.75	Brass
V94438	12" Lava Grab Bar	PVD Brushed Gold	1.75	300 x 75 x 70	11.75 x 3 x 2.75	Brass

Warranty: 2 Years

Care & Maintenance: A periodic wash using warm water and a soft cloth will retain the high quality finish of your Volcano product for many years to come. ON NO ACCOUNT should any household bleaches, detergents, abrasive polishes, steel wool or other cleaning agents be used on this item.



ICO grab bars can support loads of up to 440lbs if properly installed in compliance with ADA requirements.

Safety Warning: Grab bars are only as strong as the anchors and walls to which they are attached, and must be installed correctly for the load they intend to support. Anchors provided are not suitable for all applications. Appropriate anchors and backing must be used in accordance with local building codes.